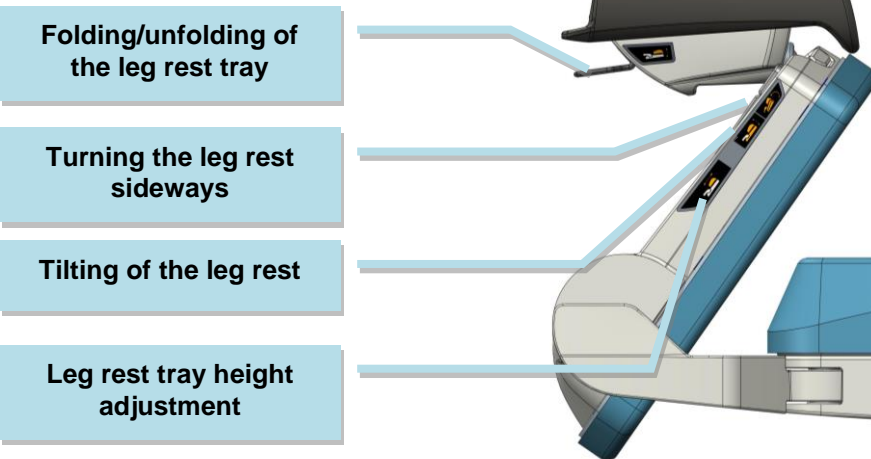


Overview of basic parts

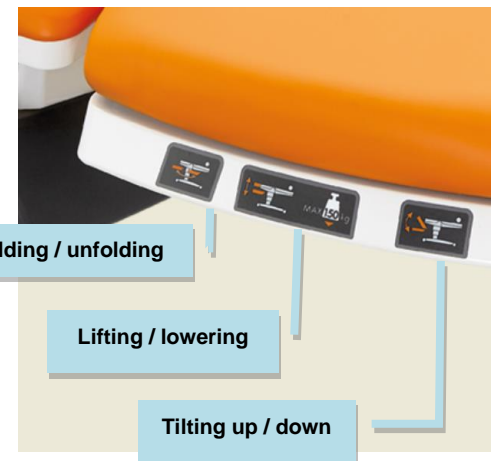
1. Back section
2. Seat section
3. Foot section
4. Castor, directional 1x
5. Castor with brake 3x
6. Plastic covers of chassis
7. Leg rests
8. Headrest
9. Back handle for transportation
10. Eurolath along seat section (option)
11. Stainless steel bowl
12. Side control panel
13. Control light for power supply
14. Holder for infusion stand
15. Hand grips
16. Side rails with electric control panel
17. Central brake
18. Manual CPR functions
19. Leg rest tray
20. Detachable bed-head (option)



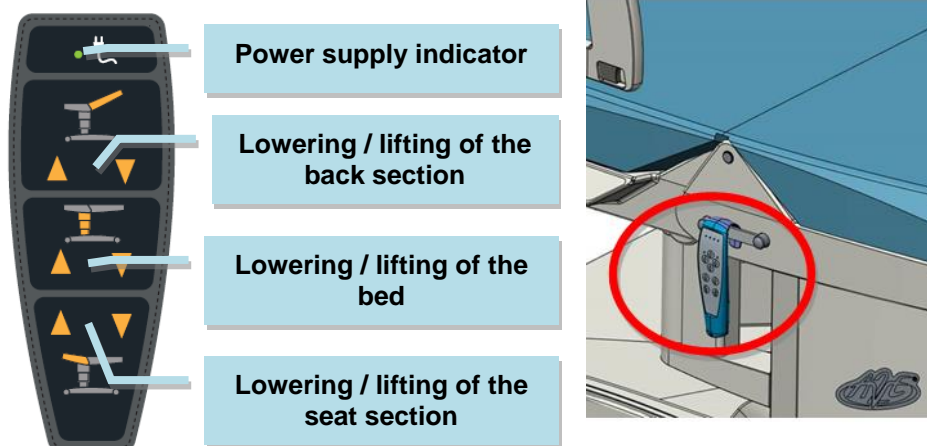
Leg rests



Foot section movement



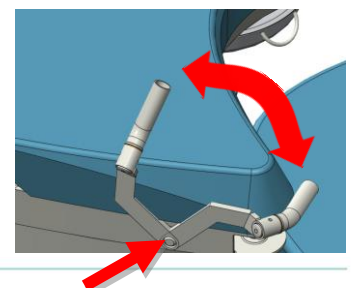
Hand controller



Tray



Hand Grips



Controllers

Lowering / lifting of the back section

Bed height adjustment

CPR lever under this arrow

Lowering / lifting of the seat section

Movement stop

Toggle bed backlight on/off

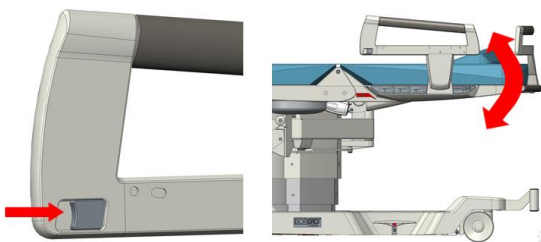
Power supply indicator

Holding the button initiates setting the bed to anti-shock position

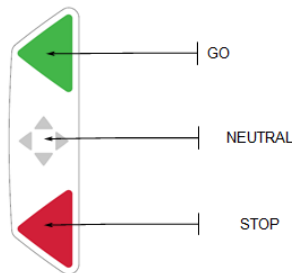
Push to activate massage segment

Control panel lock. When active, LED toggles on

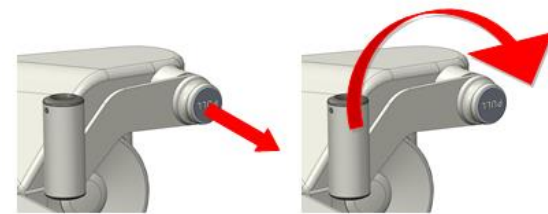
Side supports



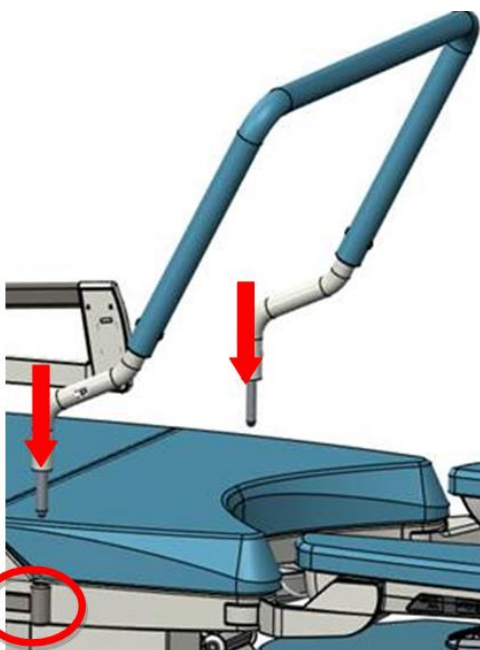
Castor's control pedal



IV Pole holder



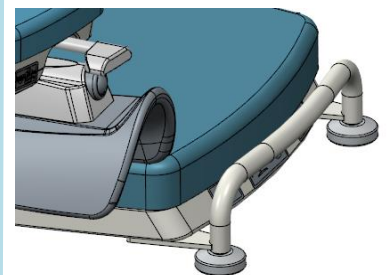
Supporting bar



CPR



Front bumper



Rear bed-head



Nurse Call



Nurse Call button